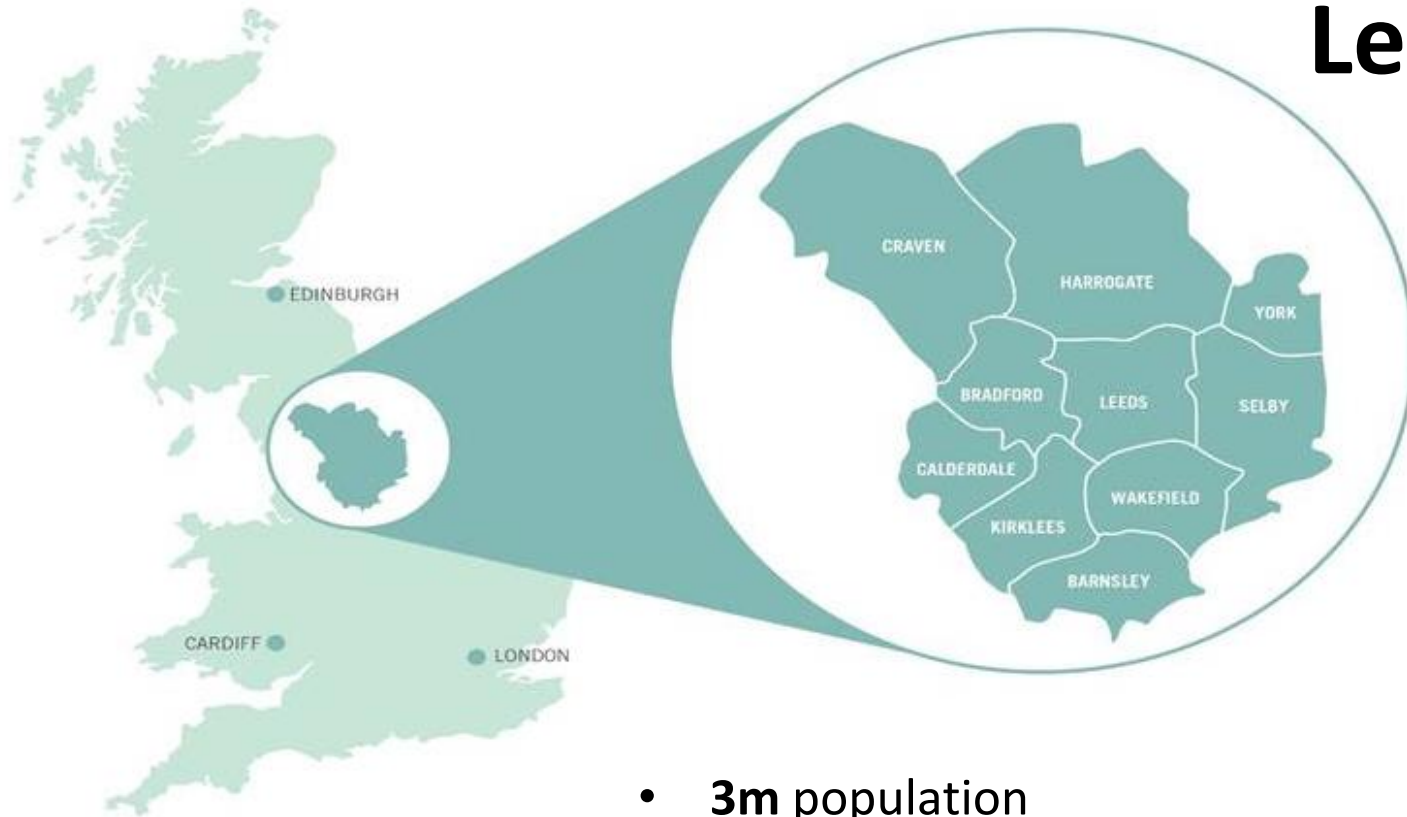




Leeds City Region Transport & Inclusive Economic Growth

Melanie Corcoran - West Yorkshire Combined Authority

Leeds City Region



- **3m** population
- **20%** of the Northern Powerhouse Economy
- UK's largest regional finance centre
- More manufacturing jobs than anywhere in UK
- **A great platform for economic growth** – but productivity is a challenge

Transforming the City Region economy

- Our ambition is to significantly boost the LCR and North's economy
- We need radical change in our economy
 - **To significantly improve productivity levels in the LCR to improve market competition**
 - **A growing and more inclusive City Region economy – with inclusive growth embedded in an inclusive Industrial Strategy**
 - **Everyone with the potential to work is able to access and progress** - in rewarding, properly remunerated employment
- A strong and resilient economy is dependent on transforming the connectivity of the LCR with the rest of the North

Transport and Inclusive Growth

- We want to make the transport system more accessible and to better connect people - to enable the widest range of people and places to contribute to, and benefit from, economic success
- We believe that promoting economic growth is compatible with improving the environment and enhancing people's quality of life

**Our
Transport
objectives**



ECONOMY



ENVIRONMENT

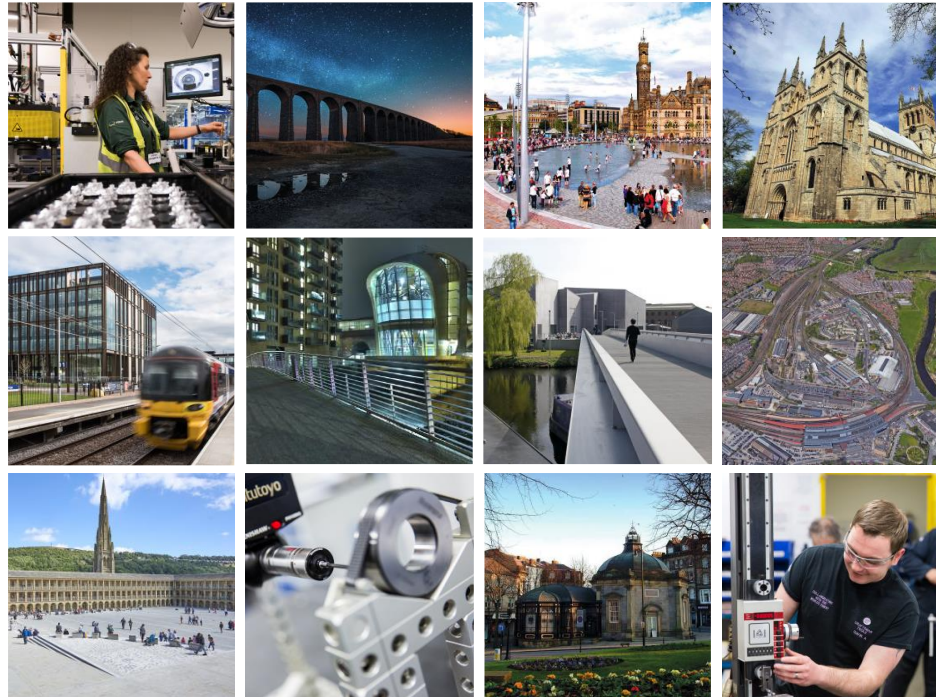


PEOPLE AND PLACE

**Our cross-
cutting
theme**



HS2 transforming the City Region economy

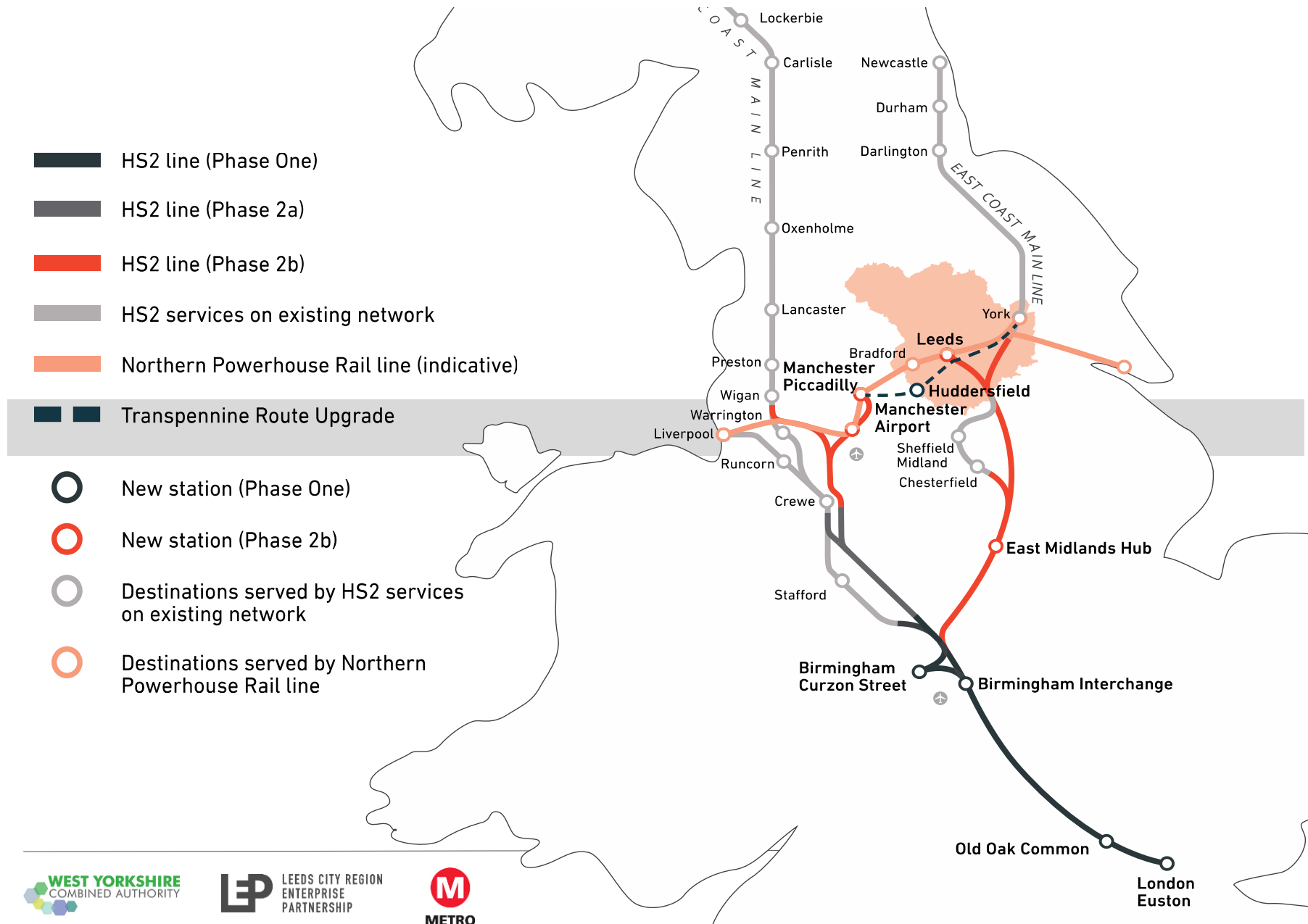


LEEDS CITY REGION

HS2 GROWTH STRATEGY

- **A unique opportunity to support the transformation of the LCR economy**
- To maximise growth benefits we must align HS2 plans with
 - Conventional rail
 - Local & regional transport networks - across all modes
 - Policies and investments in economic development and regeneration

Transforming connectivity across the north

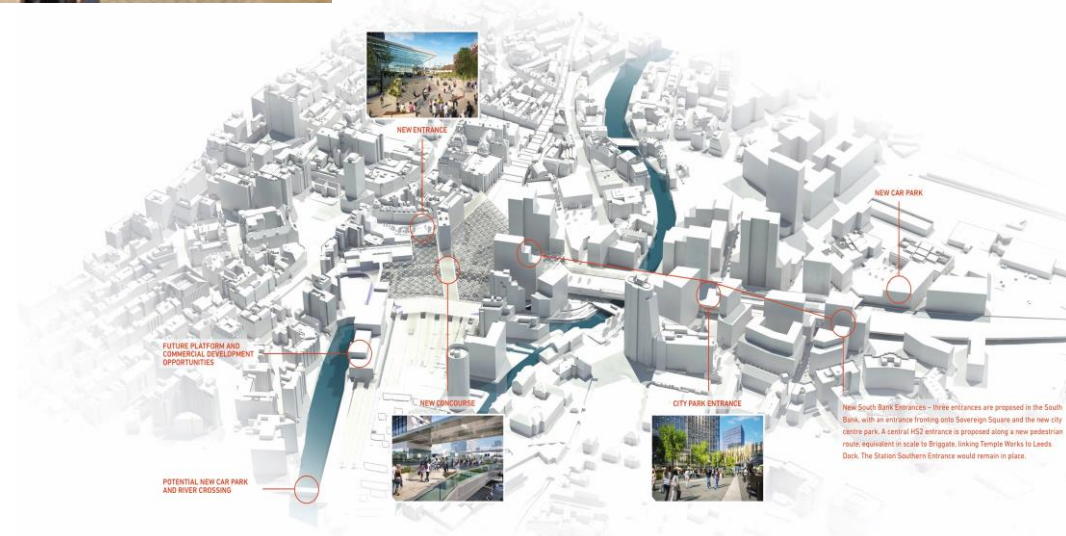
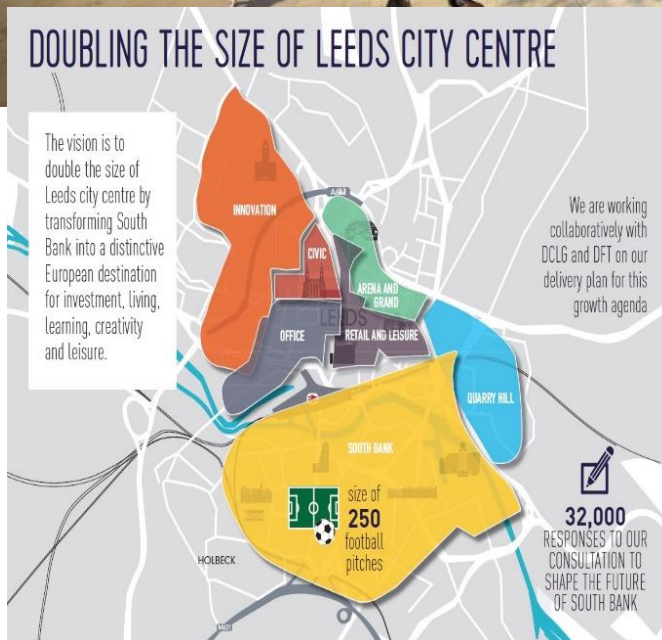


Transforming Leeds Station



Integrated Leeds Station Masterplan

- World class, user-friendly single hub
- Incorporating HS2 & NPR with local transport services
- Integrating the Leeds South Bank regeneration with City Region regeneration
- Capturing and maximising commercial opportunities



Transforming intra-city connectivity



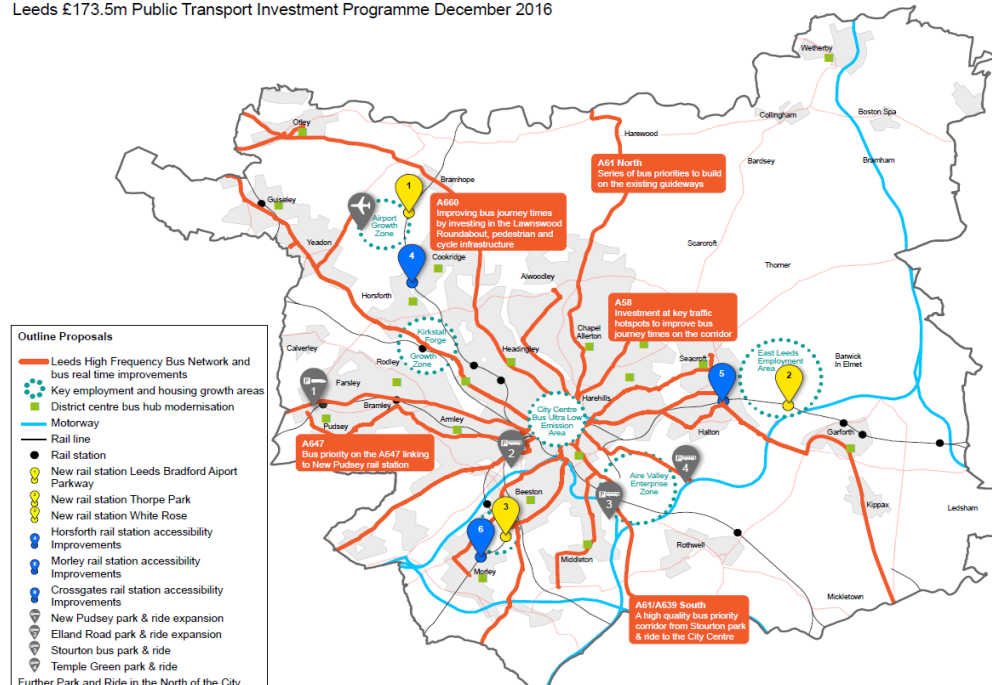
LCR HS2 Connectivity Strategy

- Focus on improving transport links and promoting local growth *within* the city region
- Working together to understand benefits for city region
- Developing an approach to **Inclusive Growth Corridors** – for the planning and delivery of transformative solutions

Transforming the Bus offer

- Key role for the bus in delivering economic, environmental, social objectives
- **WY Bus Strategy**
 - Sets ambition for 25% growth in bus patronage in the region
- **Bus 18 Partnership**
 - Short to medium term investments through partnership with operators
- **Leeds LPTIP**
 - £270m package of public transport investment in Leeds
 - Commitment to double patronage in Leeds in 10 years
- **Considering radical transformation of the public transport model** – tendered networks, smart ticketing, more demand responsive
- Strategic Park and Ride sites

Leeds £173.5m Public Transport Investment Programme December 2016



Rail Station Improvements

- 3 new rail stations opened within the last 2 years.
- 4 new rail stations planned to open in the next few years.



- Park and Rail schemes with additional parking
- Improved station gateways

Highway Schemes

- Improved connection across the City Region
- Opening up strategic sites
- Linking employment sites and housing sites
- Wakefield, WERR - New 5.5 km highway and access for 2,500 houses

